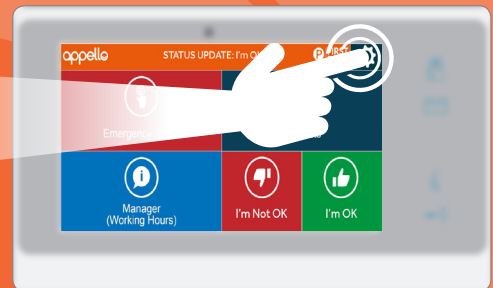


# ACTIVATING / DEACTIVATING DO NOT DISTURB

Do Not Disturb will prevent incoming calls to your LivingHub, but you are still able to activate the alarm and make calls.

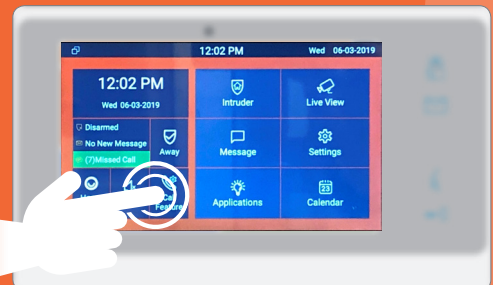
## STEP 1

From the LivingHub home screen press the settings button 



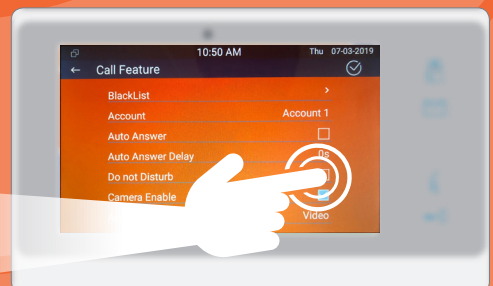
## STEP 2

In the settings menu select the 'Call Feature' icon



## STEP 3

In the following screen select the box to the right of the 'Do Not Disturb' option, a  will appear. Save the settings by selecting the ✓ in the top right of screen



A large, light grey circular graphic composed of two concentric arcs, centered on the page. The inner arc is smaller and positioned higher than the outer arc, creating a partial ring shape.

ALL OF OUR HOW TO... STEP BY STEP GUIDES ARE  
AVAILABLE IN VIDEO FORMAT, AND CAN BE VIEWED AT;

[WWW.APPELLO.CO.UK/VIDEOS](http://WWW.APPELLO.CO.UK/VIDEOS)

The Appello logo, featuring the word "appello" in a lowercase, white, sans-serif font. The letter "o" is stylized with a white circle inside it. The logo is set against a dark orange background.

appello

To talk to us about how our range of products and services can help keep you  
safe, call us on **0333 321 6470** or email **[sales@appello.co.uk](mailto:sales@appello.co.uk)**